

## Tone, Sarah

---

**From:** Krause, Eva  
**Sent:** Monday, May 07, 2018 1:47 PM  
**To:** Tone, Sarah  
**Subject:** FW: Outdoor Festival Business License Application (Red, White and Tahoe Blue 2018)

PUBLIC COMMENT - One email in support.

Eva M. Krause, AICP  
Planner | Washoe County Community Services Department | Planning & Building Division  
[ekrause@washoecounty.us](mailto:ekrause@washoecounty.us) | o 775.328.3628 | f 775.328.6133 | 1001 E. Ninth St., Bldg. A, Reno, NV 89512



Connect with us: [cMail](#) | [Twitter](#) | [Facebook](#) | [www.washoecounty.us](http://www.washoecounty.us)

---

**From:** Sherri Howard [<mailto:sherrihoward@cox.net>]  
**Sent:** Saturday, April 28, 2018 10:44 AM  
**To:** Krause, Eva  
**Cc:** 'Jim Hoyle'  
**Subject:** Outdoor Festival Business License Application (Red, White and Tahoe Blue 2018)

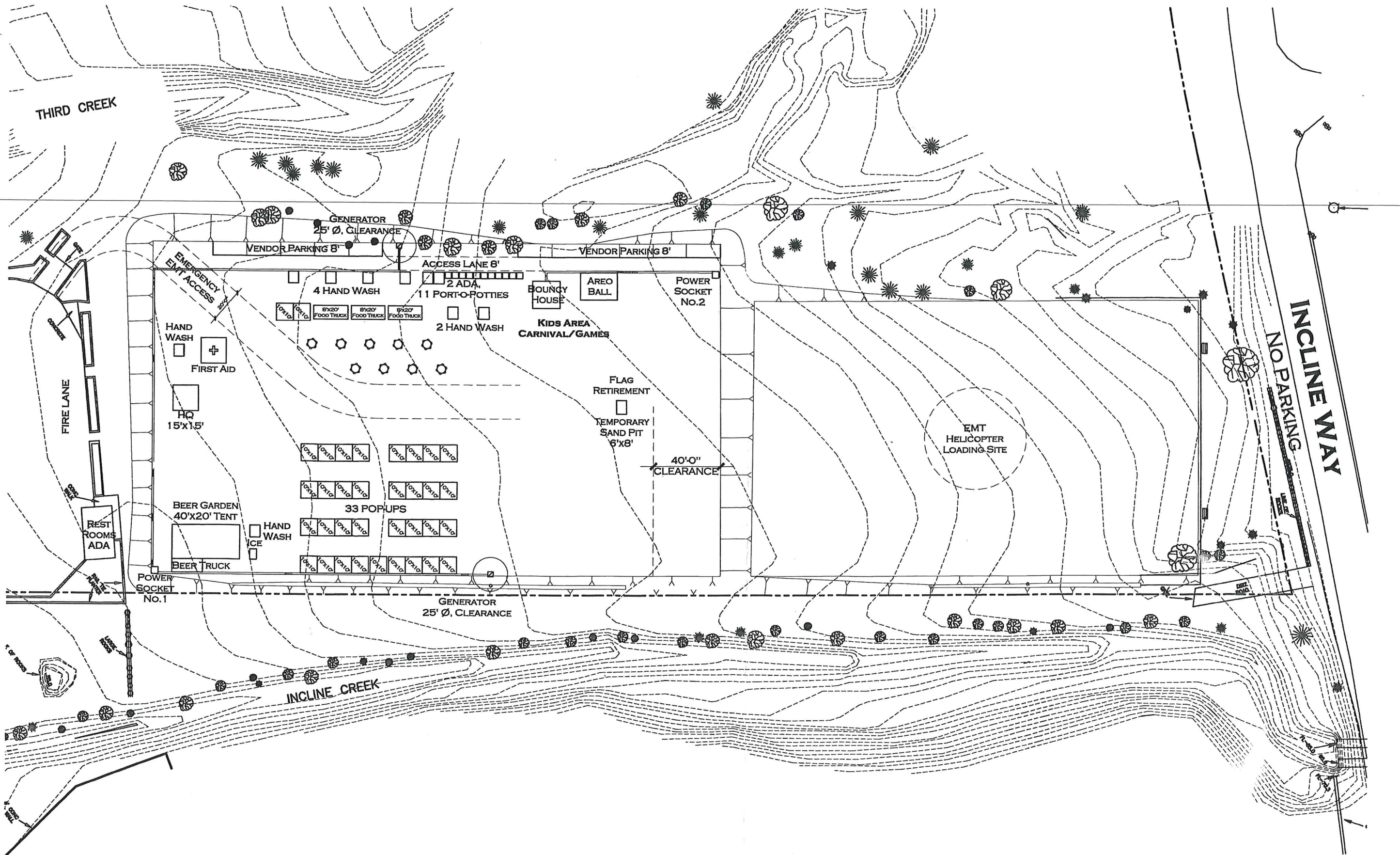
Dear Ms. Krause,

We fully support the application for a business license for Red, White and Tahoe Blue 2018.

Regards,

Sherri Howard and James Hoyle  
820 Oriole Way #62  
Incline Village, Nevada

BCC 5-8-18 #20  
Sherri Howard & James Hoyle

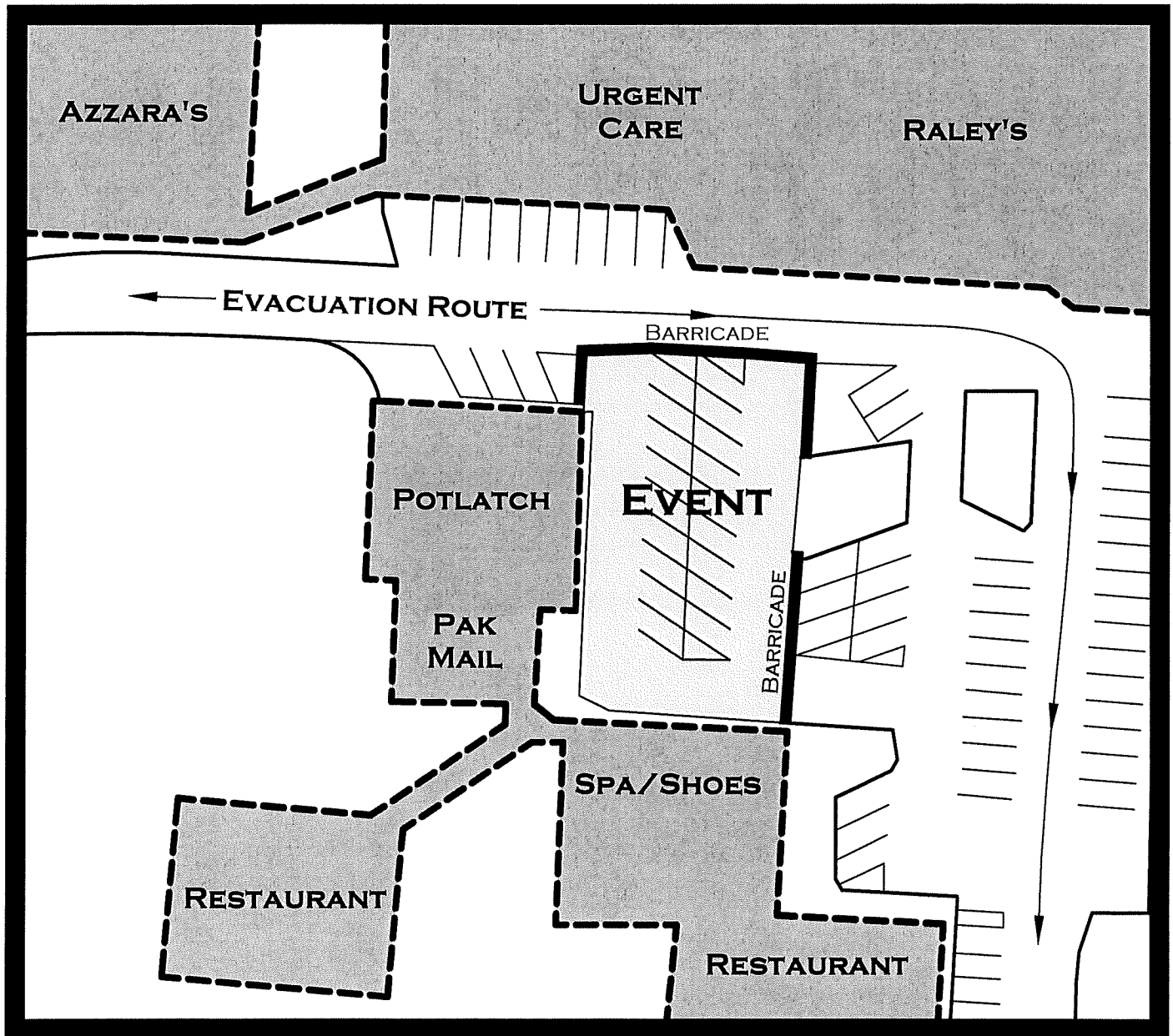


**RED, WHITE AND TAHOE BLUE 2018**  
 SCALE: 1" = 20'-0" 06 MAY 2018



BCC 5-8-18 #20  
 Pam Sheldon

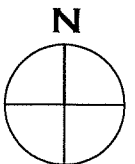
# POTLATCH



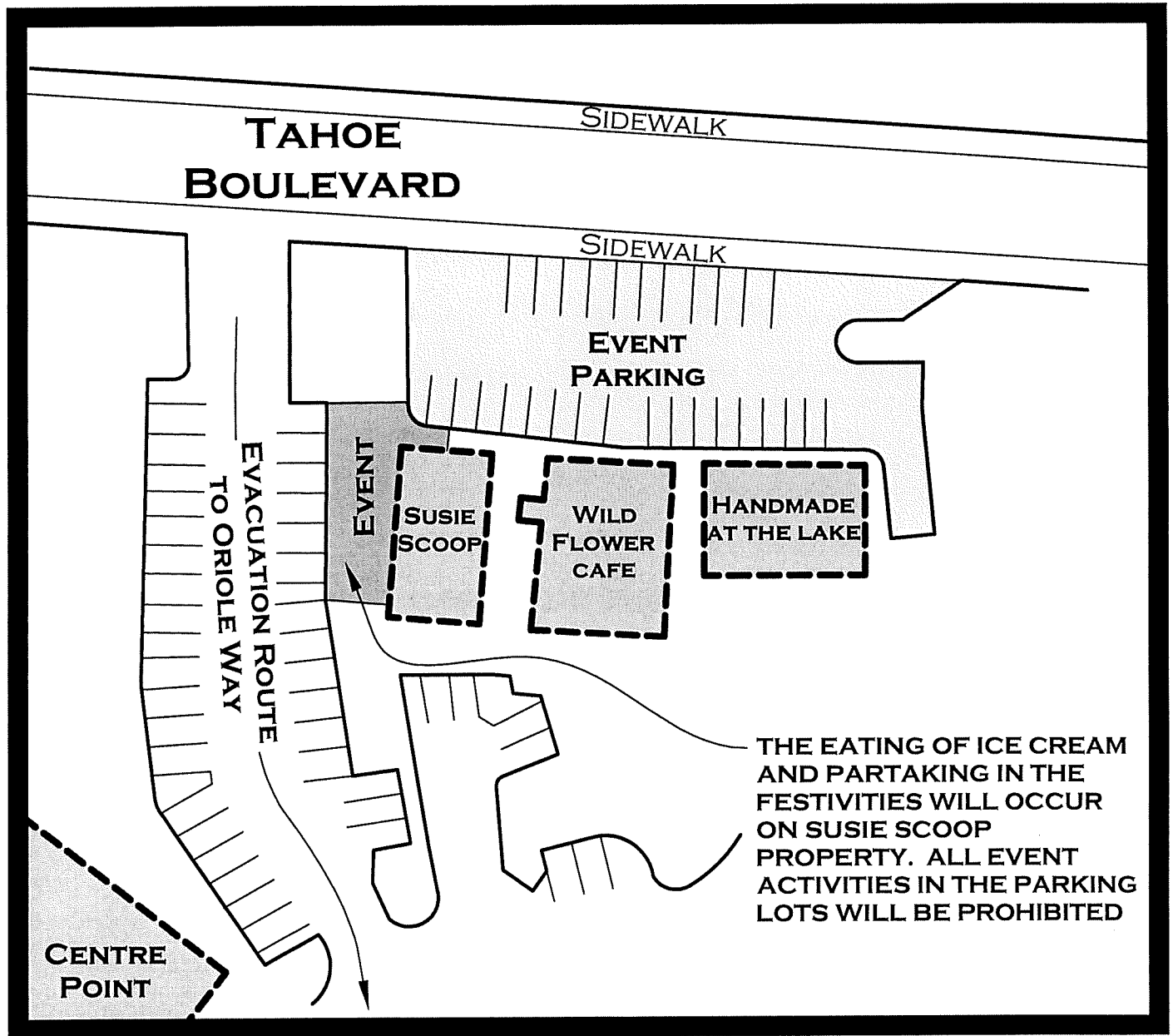
**RED, WHITE AND TAHOE BLUE 2018**

NO SCALE

06 MAY 2018



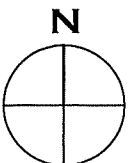
# SUSIE SCOOPS



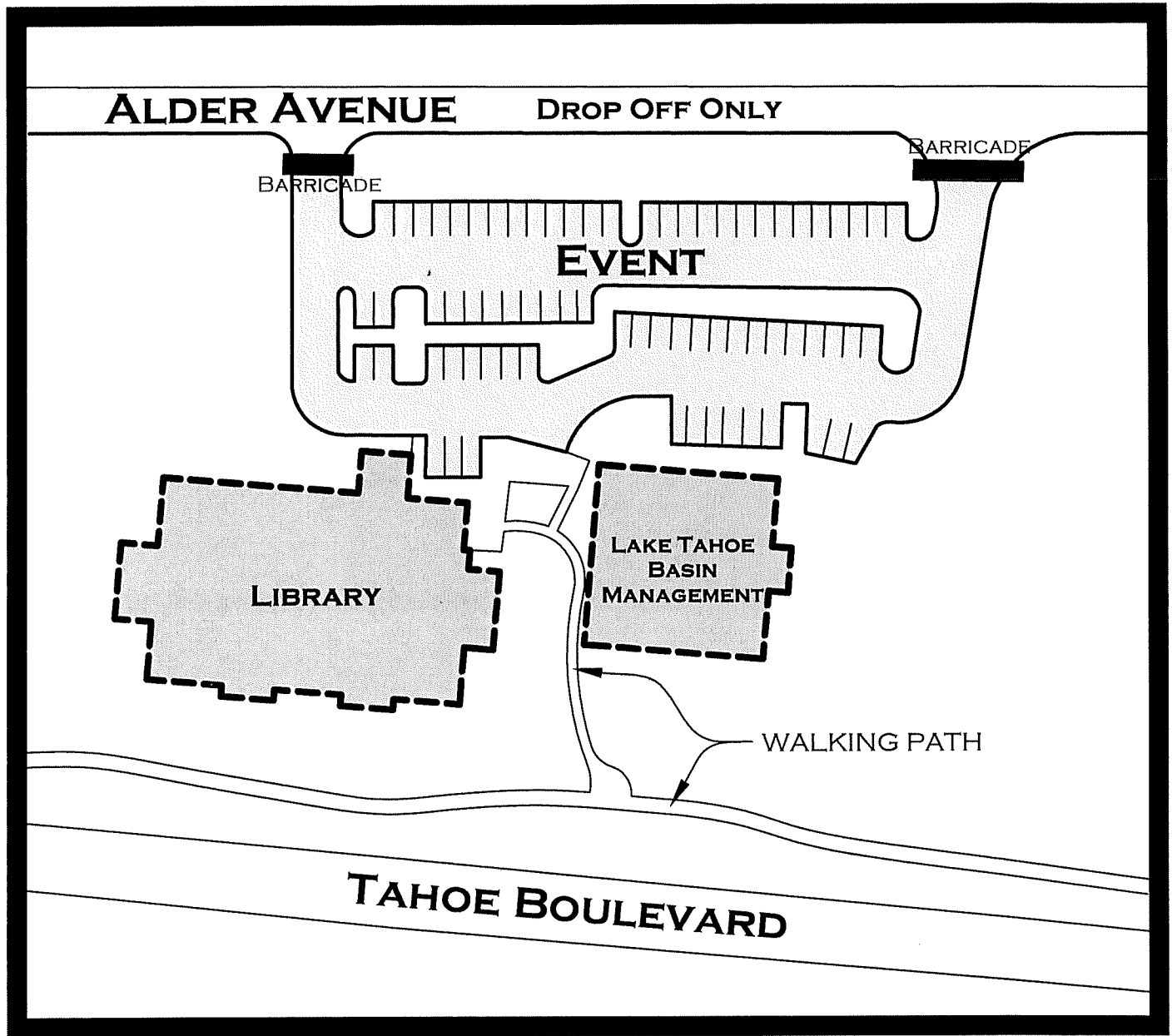
**RED, WHITE AND TAHOE BLUE 2018**

NO SCALE

06 MAY 2018



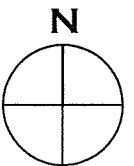
# KIDS BIKE PARADE



**RED, WHITE AND TAHOE BLUE 2018**

No SCALE

06 MAY 2018





## Event Communications Plan

---

Red, White and Tahoe Blue has contracted Dollar Radio Rentals to provide communication needs:

18 - Titan TRX4 Digital Handheld radios with earpieces and microphones.

9 Backup batteries. The Radios are capable of a 5 mile Range (As requested, please see attached rental receipt.).

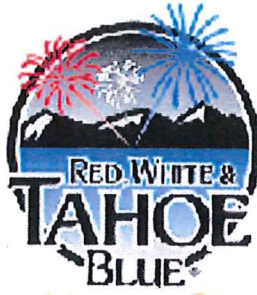
A repeater system will be established to enhance communications throughout all event sites with RWTB Event Contact Person and Key Public Safety Officials, including, but not limited to: Kids Bike Parade, Main Parade, Veterans' Events, Wine & Cheese, Chalk Drawing, Village Green, Beer & Brats, Rubber Duck Race, Fireworks, WCSO, NLTFPD, NHP, CERT, IVGID, and First Aid Station personnel.

A 32-Channel System will be utilized. RWTB will be advised by WCSO for proper assignment of different channels for communication. All radios shall be labeled with specific event and their channel assignment.

All emergencies shall be called in by radio, then followed up by a 911 Call via cellular phone.

RWTB will comply with any and all direction regarding communication allocation.

BCC 5-8-18 #20  
Jeffrey Corman



## Traffic/ Parade Plan

---

Please see attached 2018 Red White and Tahoe Blue (RWTB) Traffic Plan developed by Silver State Barricades. Silver State Barricades comes highly recommended. They employ 8 American Traffic Safety Services Association (ATSSA) Certified Traffic Supervisors and Technicians. Silver State Barricades is licensed and has experience with Nevada Department of Transportation (NDOT). The attached Traffic Plan highlights the specific placing of signs and type of signs to effectively close down the parade route and have a safe post Fireworks egress of cars.

A change from previous years, additional cones and "No Parking" signs shall be deployed at the east end of Village Boulevard and Incline Way where the road narrows leading to Country Club Drive. Additionally, "No Parking" signs and cones with caution tape between them will be placed on Lakeshore Boulevard between Country Club Drive and Village Boulevard.

New for 2018 RWTB, barricades shall be placed on either end of the Main Parade route at Highway 431 just south of the roundabout and just north of Country Club Drive. Barricades shall be placed at the intersection of Southwood Boulevard and Incline Way where the Parade Route makes its final turn before dispersing.

Also new for 2018, Red, White & Tahoe Blue (RWTB), in connection with the, Nevada Highway Patrol (NHP), Washoe County Sheriff's Office (WCSO) and the Community Emergency Response Team (CERT) will be executing a rolling-closure of the RWTB Parade route along State Highway Rte. 28 along the Parade route. Beginning at approximately 8:00am or as initiated by Public Safety officials, NHP will block south bound traffic on Rte. 28 at the Rte. 28/ Highway 431 roundabout. Northbound traffic from the intersection of Northwood/ Southwood Blvd. at Rte 28 also will be closed beginning at 8:00am. All streets and driveways feeding into this section of Rte. 28 will

be closed at this time, and barricades will be put in place. Subsequently, the section of Rte. 28 between the Northwood/ Southwood Blvd. intersection and the Village Blvd. intersection will be closed. All streets and driveways feeding into this section of Rte. 28 will be closed at this time, and barricades will be put in place. By 10:00am, the section of Rte. 28 between Village Blvd. and an NHP blockade just North of the Country Club Drive intersection will be closed. All streets and driveways feeding into this section of Rte. 28 will be closed at this time, and barricades will be put in place.

2 large traffic cones will have been staged at each of the 34 driveways along the parade route by Silver State Barricades. Volunteers with RWTB identifiable shirts and safety vests will put the cones in place. These volunteers will be within private property bounds and not in the public thoroughfare. WCSO will block above and below Rte. 28 at major intersections such as Village Blvd. Designated CERT volunteers will provide traffic control on Washoe County roads/ sub streets to divert traffic from parade route/ congestion.

Cognizant of the current climate and need for exceptional public safety measures and planning, IVGID/ Waste Management will provide 2 dump trucks to follow the end RWTB Parade for the sole purpose of blocking any incoming traffic from behind the parade participants. WCSO shall lead the RWTB Parade through the route as usual.

No parking will be allowed along the parade route on Saturday, June 30, 2018. The "No Parking" rules will apply as well on streets narrowed for one-way use as it decreases the ability for fire department apparatus to respond to emergencies. All roads/ streets shall have a minimum clear width of 20 feet passable at all times.

Parking restrictions shall be strictly enforced and vehicles that park in areas that block fire department access shall be towed by RWTB, IVGID and law enforcement.

Message Boards shall be placed on Highway 28 on or about June 25, 2018 to inform residents and visitors of the coming events and road closure dates/ times.

Egress will be helped considerably this year as NHP officials intend to manually time traffic lights at key egress points of Highway 28 and Village Blvd, and Highway 28 and Country Club Drive JULY 4TH, 2018.

Friday, June 29th: All rented signs and cones (For both parade route and fireworks egress) will be delivered and positioned (staged) to their locations as indicated in the



2018 RWTB Traffic Plan with stated additions above and completed by no later than 12:00am Midnight.

Saturday, June 30th: 2018 RWTB Traffic Plan for the parade route will be executed and set-up for road closures by 8:00am and removed by 12:00pm Noon.

Monday, July 2nd: All "No Parking" signs for fireworks egress and July 3rd Parking Plan will be placed with "No Parking Allowed July 3-4, All Hours" signs. Cones with caution tape and all other signs will be placed by 12:00am Midnight of July 2nd on Lakeshore Blvd. Removal of cones will begin post fireworks. Traffic signs will be removed by Silver State Barricades on or before the end of day Thursday, July 5th, 2018.

Egress will be helped considerably this year as NHP officials intend to manually time traffic lights at key egress points of Highway 28 and Village Blvd, and Highway 28 and Country Club Drive JULY 4TH, 2018.



## Fire Protection Plan

---

The North Lake Tahoe Fire Protection District (NLTFPD) will permit and inspect the Village Green, vendor set-up, and Parade Route. The Red White and Tahoe Blue (RWTB) Board shall work and coordinate with NLTFPD Fire Marshal, Mark Regan, for inspections prior to, during, and after the days of the event.

“NO SMOKING” Signs shall be posted throughout the Village Green and Aspen Grove for all events. All RWTB Volunteers shall strictly enforce the NO SMOKING policy. There are no designated or planned smoking areas.

“ABC” Fire Extinguishers shall be required by all vendors at their locations, and other areas as designated by NLTFPD. RWTB will provide “K” type fire extinguishers at cooking events in Aspen Grove. ABC fire extinguishers are provided by RWTB as required by NLTFPD (See Site Plan for Wine & Cheese and Beer & Brats). All vendors with cooking equipment shall be inspected for compliance.

RWTB Event Chairpersons shall ensure all event set-up areas are mowed and free of vegetation.

CO2 CYLINDERS Shall be secured with a stake and chain or ratchet straps as needed throughout the event.

No parking will be allowed along the parade route on June 30<sup>th</sup>, 2018. NO PARKING rules will apply as well on streets narrowed for one-way use. The narrowed streets decrease the ability for fire department apparatus to respond to emergencies. All roads/ streets shall have a minimum clear width of 20 feet passable at all times.

PARKING RESTRICTIONS shall be strictly enforced and vehicles parked in areas blocking fire department access shall be towed by RWTB, IVGID or law enforcement.

The Incline Village General Improvement District (IVGID) shall be providing event organizers with golf carts. Two of these carts will be designated for NLTFPD use. Radios will be assigned to official public safety personnel for communication with RWTB Event Chairman/ Contact and with medical personnel during event hours.

Red, White and Tahoe Blue has contracted Dollar Radio Rentals to provide communication needs:

18 - Titan TRX4 Digital Handheld radios with earpieces and microphones.

9 Backup batteries. The Radios are capable of a 5 mile Range (As requested, please see attached rental receipt.).

A repeater system will be established to enhance communications throughout all event sites with RWTB Event Contact Person and Key Public Safety Officials, including, but not limited to: Kids Bike Parade, Main Parade, Veterans' Events, Wine & Cheese, Chalk Drawing, Village Green, Beer & Brats, Rubber Duck Race, Fireworks, WCSO, NLTFPD, NHP, CERT, IVGID, and First Aid Station personnel.

A 32-Channel System will be utilized. RWTB will be advised by WCSO for proper assignment of different channels for communication. All radios shall be labeled with specific event and their channel assignment.

All emergencies shall be called in by radio, then followed up by a 911 Call via cellular phone.

RWTB will comply with any and all direction regarding communication allocation.

The rear gate at Aspen Grove shall remain open during event hours for emergency egress. A RWTB volunteer not imbibing alcoholic beverages will guard the gate during event hours.

All tents over 400 sq. ft. must meet NFPA 701 flame rating and any tent used in a cooking area must also meet NFPA 701 flame rating. To the knowledge of RWTB Chairmen at this time, no tents will be used by any vendors cooking.

SITE TRAFFIC PLANS (see attached) have been prepared by Silver State Barricades, and will be enforced by WCSO, NLTFPD, RWTB, and IVGID

RWTB will be responsible for additional costs incurred by WCSO and/ or NLTFPD to provide protection for the community during events.



## Event Medical Services

---

NLTFPD (Fire Marshal, Mark Regan) has agreed to provide the event with on-site staffing to address medical concerns that arise. Two first-aid stations with signage shall be set up. One on the Village Green and one on Incline Beach. NLTFPD and Incline Village Community Hospital (IVCH) will have transportation with ALS and driver at all times. IVCH will provide support to RWTB up to 16 hours over the two day period (7/3 - 7/4/ 2018) to be present at a First Aid location on Incline Beach.

\*Please see attached IVCH letter confirming their participation.

One hand-washing station will be dedicated to the First Aid station on the Village Green for medical personal and separate from general public. 4 Hand washing stations will be provided at location of portable toilets. ADA handicap accessible portable restrooms will be available at designated locations at Village Green as well as those permanent facilities at Village Green, Ski Beach and Incline Beach.

Biological waste containers will be provided at the two first aid stations as per Incline Village Community Hospital.

Two dedicated golf cart's shall be provided to NLTFPD to be used as a people mover for medical and/or fire personal to bring medical response personal to access areas not available to motor vehicles. NLTFPD to provide signage for the dedicated golf carts.

A principal medical response personnel will be provided with a two-way radio to communicate with event staff and security at all times. A channel will be designated for first aid communication at all times on event days.

Care Flight will have access to land on Upper Village Green field, and the Incline Villah High School field as a back-up landing.

Use of alcohol, by volunteers, is not permitted during event. Volunteers and Event Staff should keep an eye out for people under the influence. If an observer or participant seems to be under the influence, this person should be asked to leave. If this person seems to be in medical distress, plan of action for Assistance Requiring Medical Care should be taken.

Summary data of medical contacts will be provided to Washoe County upon conclusion of the events, no later than July 7, 2018

Should Village Green and/or Incline Beach become suddenly unsafe for any reason, including acts of civil disobedience, nature (rain with lightning), etc. and either WCSO or NLTFPD determine the situation is unsafe, Event goers will be moved to either Aspen Grove and the Hyatt Casino. WCSO, NLTFPD and RWTB personnel shall communicate and direct the evacuation. Follow Incline Emergency Evacuation Plan, for city-wide evacuation: <http://www.nltfpd.net/wp-content/uploads/2013/03/Emergency-Preparedness-Brochure.pdf>



## Security

---

The safety and security of Red White and Tahoe Blue attendees is the #1 priority of the 2018 RWTB Chairmen and Board Directors.

All security personnel (hired and volunteer) will work in conjunction with Washoe County Sheriff's Office. CERT, a volunteer security committee which has assisted RWTB for many years, now headed by director Mike Perry will be in place to assist WCSO with directing traffic at key locations on Washoe County roads in Incline Village. 2018 RWTB Chairmen, Jeffrey & Kirstin Corman, have met with law enforcement officials Lt. Bello, Chief Pedersen, Sgt. Palmer, and Capt. O'Connor to determine what must be covered by uniformed officers and the cost of said security. Lt. Bello has indicated the WCSO command center will be located at Incline Beach again.

A private security company shall be contracted to work in conjunction with WCSO as well as CERT, NLTFPD, NHP and NDOW.

Primary Security needs will be on:

Saturday, July 30, 2018 from 9:30am to 12:30pm during the RWTB Parades, and Tuesday, July 3rd and Wednesday, July 4th from approximately 8:00am until the events close and crowds are dispersed.

RWTB Chairmen have reviewed with WCSO officials fees per event. RWTB will be responsible for additional costs incurred by WCSO to provide police protection for events and the community.

Private Security, CERT, specified WCSO & NLTFPD officials shall be provided with two-way radios to ensure seamless communication with RWTB Event Chairpersons. A specific channel will be dedicated for communication at all times on event days.



---

## Security

---

2018 Red White and Tahoe Blue has contracted with a fireworks provider that secures and stores their own Fireworks. Pyro Spectacular is a NV Licensed and insured provider. Pyro Spectacular is experienced with producing pyrotechnic shows in the Lake Tahoe Basin. They are consistently compliant with Coast Guard and all other requirements. In addition to storing the fireworks, Pyro Spectacular operates with a crew of 8-10 experienced employees. This size of a crew allows them to efficiently load, set-up fireworks in a maximum of 2 days, and provide 24 hour security on the barge. RWTB provides Pyro Spectacular barge security with a Titan TRX4 Digital Radio with earpieces, microphones and back-up batteries. The radio is capable of a 5 mile range. A Repeater System has been rented as well to enhance communication.



## Water Facilities and Power

---

RWTB use of existing water supplies at the Village Green has been approved by Incline Village General Improvement District (IVGID) in a MOU stating part of the required sanitation facilities will be satisfied by the use of IVGID on-site facilities.

On-site potable water is certified and approved by the county as per IVGID. Water distribution will be in accordance with health regulations. Bottled water is available for sale at all concession stands, and available at First Aid stations for medical purposes. All water lines and hoses for concessions will be food grade fours on the Village Green for the Community Fair. RWTB rents a generator of the size and rating necessary to supply power to all food vendors. RWTB will look to NLTFPD for direction on location and preparation of the generator and meet all safety requirements.

All cords and other trip hazards will be either buried or in electrical chase-ways.





## Sanitation Facilities

---

Red White and Tahoe Blue has contracted with Quick Space services to provide all on-site portable restroom facilities and hand washing facilities. Their business is located in Sparks, Nevada and is in compliance with Washoe County health regulations.

Currently, the contract contains the following:

- Quick Space will provide RWTB with 12 portable restroom units
- Quick Space will provide RWTB with 2 ADA handicap accessible portable restroom units
- Quick Space will provide RWTB with 5 hand washing stations
- Quick Space will provide RWTB with 5 metal trash barrels
- Quick Space will service and maintain all provided units July 2nd - 4th, 2018.
- Quick Space will completely service units each evening of RWTB.

### IVGID Existing Facilities:

Village Green Building provides ADA handicapped accessible toilets with two full lavatories (men and women) each with 4 toilet stalls.

Incline Beach and Ski Beach Buildings each provide ADA handicapped accessible toilets. Each building has two full lavatories (men and women) each with 4 toilet stalls (total 16).

Aspen Grove Building provides 2 ADA handicapped accessible lavatories.

Placement of units on-site can be found on the RWTB Village Green site map. Units will be placed a minimum of 50 feet from food service operations. 1 hand washing station is designated for the first aid station on Village Green.



## ECOLOGY: Cleanup and Rubbish Removal Plan

---

The Incline Village General Improvement District (IVGID) will again supply sufficient waste receptacles and staff to maintain receptacles. The maintenance of these include, but is not limited to, emptying the receptacles, replacing bags and transporting refuse.

RWTB volunteers as well maintain the removal of waste before, during and after each event with a standard to leave each venue in as good or better condition than it was prior to use.

All vendors, including food and beverage vendors, are required to follow the rules and regulations set forth by the Washoe County Health Department. A dive team has been contracted through RWTB to retrieve all fireworks including skimming the top of the lake surface and collecting shells and debris after the event. The signed contract has been approved by NLTFPD. In addition, IVGID will follow-up with beach clean-up of debris.

RWTB, in conjunction with IVGID, accepts responsibility for the total clean-up of the sites used during RWTB events.

## RECYCLING PLAN: Cardboard, Aluminum, Plastic Bottles

---

RWTB will be working with IVGID and Waste Management to organize a recycling plan. Separate recycling bins will be provided for various recyclables: cardboard, aluminum cans, plastics, etc. We will have blue bags and recycling bins located throughout the event. The maintenance of these include, but is not limited to, emptying the receptacles, replacing bags and transporting refuse.



**LIGHTING PLAN:** Parks staff need to deliver to the following locations:

1. Incline Beach west side setup just outside west gate to the park in the easement lighting for crossing Lakeshore Blvd and exiting the park. Assigned to Gerry Eick
2. On the NW corner of Village and Lakeshore. Assigned to Gerry Eick
3. Incline Beach inside park, west side of gate guard shack on turf, on right as you enter the park. Lighting for exiting the park. Assigned to Charlie Wiedenhoft
4. Incline Beach inside park, east side of gate guard shack on turf. Lighting for exiting the park. Assigned to Charlie Wiedenhoft
5. Ski Beach near bridge. Lighting for exiting the park Assigned to Sam Gough.
6. Ski Beach entrance to park. Lighting for exiting the park. Assigned to Sam Gough.
7. Ski Beach midway down Main Island inside park facing both north and south. Lighting for exiting the park. Assigned to Sam Gough.
8. Ski Beach east of boat ramp shining toward Incline beach and Hermit beach. Lighting for exiting the park. Assigned to Sam Gough.
9. Village Green, middle of field east side. Lighting for upper and lower Village Green after the event. Assigned Cameron Riege,
10. Village Green, middle of field west side. Lighting for upper and lower Village Green after the event. Assigned to Cameron Riege
11. Village Green, Bottom of field east side. Lighting for Village Green after the event. Assigned to Cameron Riege
12. Incline Way, Recreation Center side of the road, at the end of the fire road driveway. Lighting for crossing Incline Way. Assigned to Cameron Riege
13. Crosswalk at Lakeshore Blvd and Country Club Drive.

IVGID shall turn on all lights

The boat ramp will be lighted by a temporary light pole and assigned to Sam Gough.

## **Samantha Gough**

Parks Supervisor

Incline Village Parks & Recreation Department

P: 775-832-1189

M: 775-745-7604

[sag@ivgid.org](mailto:sag@ivgid.org)

## **Indra Winquest**

Director of Parks & Recreation

Incline Village Parks & Recreation

980 Incline Way, Incline Village NV 89451

P: 775-832-1323

F: 775-832-1380

[isw@ivgid.org](mailto:isw@ivgid.org) <http://www.inclinerecreation.com>

## RED WHITE AND TAHOE BLUE EVENT CHAIR & CONTACT LIST

Jeffrey Corman – Chairman	<a href="mailto:tahoejeffrey@gmail.com">tahoejeffrey@gmail.com</a> 7753391144
Kirstin Corman – Co-Chairman	<a href="mailto:telemama3@me.com">telemama3@me.com</a> 7757624677
Shawn Noe – Treasurer	<a href="mailto:shawn.noe@charter.net">shawn.noe@charter.net</a> 7752407300
Pamela Sheldon – Secretary	<a href="mailto:pamelasheldon961@yahoo.com">pamelasheldon961@yahoo.com</a> 6266446818
Sheila Leijon – Veterans/Para-Rescue Demonstration	<a href="mailto:saleijon@hotmail.com">saleijon@hotmail.com</a> 7757621091
Mary Kleingartner – Wine & Cheese	<a href="mailto:mkleingartner@hotmail.com">mkleingartner@hotmail.com</a> 2066041200
Jeff Sheldon – Parade	<a href="mailto:patentpend@gmail.com">patentpend@gmail.com</a> 6266761201
Cookie Steinberg – Kids Parade	<a href="mailto:ray_cookie@yahoo.com">ray_cookie@yahoo.com</a> 8186060081
Pamela Sheldon - Community Fair	<a href="mailto:pamelasheldon961@yahoo.com">pamelasheldon961@yahoo.com</a> 6266446818
Kay Lehr – Donors	<a href="mailto:k.lehr@sbcglobal.net">k.lehr@sbcglobal.net</a> 7758310273
Alec Flores - Fireworks	<a href="mailto:alec@whytrastahoe.org">alec@whytrastahoe.org</a> 7753600586
Sabrina Dukes - Volunteers	<a href="mailto:dukes99@sbcglobal.net">dukes99@sbcglobal.net</a> 8322595238
Rick Sweeney - Safety	<a href="mailto:rick@memptypants.com">rick@memptypants.com</a> 7752982980
Matt Reardon - Entertainment	<a href="mailto:matt@squawvalleyinstitute.org">matt@squawvalleyinstitute.org</a> 3106788110
Steven Thomason - Food & Beverage	<a href="mailto:thelocal907@gmail.com">thelocal907@gmail.com</a> 7758310568
Laura Bernard Canale - Kids Events	<a href="mailto:laurasonoma@hotmail.com">laurasonoma@hotmail.com</a> 7753369220
Terra Lovelace - Marketing	<a href="mailto:lovelace@print-happens.com">lovelace@print-happens.com</a> 5595009568
Mitch Harbaugh – Marketing	<a href="mailto:mitch@mitchsoup.com">mitch@mitchsoup.com</a>
Logan Rebholz – Web Master	<a href="mailto:loganr@wiredirect.com">loganr@wiredirect.com</a> 7758132710

# LIST of VENDORS

1. **Camelot Party Rentals** – *Tents (big tent)*
2. **Event Masters** – *Chairs/Tables*
3. **Creative Covering** – *Linens*
4. **IVGID** – *Lighting and Golf Carts*
5. **The Local** – *Beer Gardens/Staffing and Bartenders*
6. **Quick Space** – *Restrooms and Fencing*
7. **Silver State Barricade** – *Traffic Plan w/ current year*
8. **Waste Management** – *Waste Removal*
9. **Spencer Investigations** – *Private Security*
10. **Silver State Barricade** – *Compliance w/ Traffic plan*
11. **Washoe County Sheriff** – *Parade & Security assistance, traffic control*
12. **Nevada Highway Patrol** - *Parade & Security assistance, traffic control*
13. **Pyro Spectacular** – *Fireworks transportation & security of explosive materials*

## **Contracted by Pyro Spectacular**

- *Steve Eikam – Diver/ Firework clean-up*
- *High Sierra Marine – Service, Towing/ Parking*

15. **Lumos** – *Pole tests/ Inspections*
16. **Bragg** – *Trucking + Crane*
19. **Michael Perry** – *CERT Director*
20. **Dell Rowley** – *CERT*
21. **Incline Tahoe Foundation**
22. **Parade**
  - *NLTFPD does not provide traffic control*
  - *CERT supports traffic control ONLY on sub-streets*

*NOTE: Sandbags need to be staged by bouncy house*



Dear Chief Summers and RWTB committee,

The Incline Village Community Hospital, once again plans on providing a nurse to support our community at the Red, White & Tahoe Blue Event. We can provide this nurse for up to 16 hours over the two day period to be present at a First Aid Tent/location at Incline Beach.

Once you have exact times and locations for where assistance is needed, please let us know.

Regards,



Jan Iida

Director of Patient Care, Incline Village Community Hospital.

Find messages, documents, photos or people



← Back ↶ ↷ → Archive Move Delete Spam ...

- Inbox** 68
- Unread
- Starred
- Drafts 56
- Sent
- Archive
- Spam
- Trash
- Less
- Views** Hide
  - Photos
  - Documents
  - Travel
  - Coupons
  - Tutorials
- Folders** Hide
  - + New Folder
  - 10 Days Organize
  - 40 Days in the Wo...
  - 5K Run
  - A Operation...
  - A Quiet Time 8
  - A Rick Warren
  - a Wayne 6
  - AAUV
  - aCompel
  - Adams Family
  - APictureCour...
  - aChalk
  - ARC
  - ATT bills
  - Beth Moore Event
  - Bible Study
  - Blog 17
  - Book Club
  - Bussis 1
  - CCC Wedding
  - Christian Course
  - Christian Fiction
  - Christmas Wish List
  - CM Business
  - Codes

RE: Firehouse Breakfast

Yahoo/Inbox

**Tia Rancourt** <TRancourt@nltfpd.net> Apr 10 at 12:25 PM  
 To: Pamela Sheldon  
 Cc: Ryan Sommers, Mark Regan

Pam,

**Ingress/Egress:** There will be street parking on surrounding streets near the fire station on Tanager, Enterprise and Oriole as well as our 866 Oriole, 219 Enterprise and Incline Station 863 Tanager parking lots. We also have parking space available across the street at the Starbucks Plaza.

**Security:** Cones will block off event for traffic safety marking off event area in front of the fire station and we will have staff directing foot traffic during the event from 8a - 10a. Most attendees walk from other areas in town to the fire station.

**Communications:** direct communications w/WC dispatch and WCSO using WC 800 system.

**Medical standby** will be provided at the event by NLTFPD with paramedics and EMTs.

Thank you,



**Tia Rancourt**  
**Public Education/Information Officer**  
 Office: 775.833.8106 | Cell: 775.813.8106  
 Email: [trancourt@nltfpd.net](mailto:trancourt@nltfpd.net)  
 866 Oriole Way | Incline Village | NV 89451



**From:** Pamela Sheldon [mailto:pamelasheldon961@yahoo.com]  
**Sent:** Monday, April 9, 2018 2:11 PM  
**To:** Tia Rancourt <TRancourt@nltfpd.net>  
**Subject:** Firehouse Breakfast

County is requiring that we provide for them "security, traffic and parking plan that includes safe ingress and egress and communication plan" for the breakfast scheduled June 30. This is especially important in that Mark Regan said there would be an attendance of 1500 people. The information is due Wed. so can I get something from you by tomorrow afternoon? I think a written summary would satisfy this requirement for now but will need more detail before June 1. Thanks. Pam RWTB

View my blog at [www.womanatthewell.us.wordpress.com](http://www.womanatthewell.us.wordpress.com)

**\$8 OFF PER NIGHT**

SAY HELLO TO RED™

**BOOK NOW**

**RAMADA WORLDWIDE**

Find messages, documents, photos or people

← Back ↶ ↷ → Archive Move Delete Spam ...

Fwd: Re: July 4th Firework cleanup 2018 Proposal

Yahoo/Inbox



Brad Perry <perrybooking@live.com>  
To: Pamela Sheldon, Mark Regan

Apr 11 at 8:34 AM

Get [Outlook for Android](#)

From: stevenlee775@gmail.com  
Sent: Wednesday, April 11, 8:05 AM  
Subject: Re: July 4th Firework cleanup 2018 Proposal  
To: Brad Perry  
Cc: mgifillan@pyrospec.com

**Tahoe Red White and Blue 2018**

**Invoice:**  
Surface skimming (after display and following morning)

underwater cleanup.(July 5)

July 4<sup>th</sup> 2018

Surface Skimming- \$1000  
Underwater Cleanup- \$2000

**Total** \$3000  
( Payment required before work can begin)

Thank you,

Steve Eikam  
818 Overview Ct  
Carson City, NV 89705

7758483786

↶ ↷ → ...

5% cash back means more possible.



Plus, earn a \$100 cash back bonus

[Learn More](#)



- Inbox** 25
- Unread
- Starred
- Drafts 36
- Sent
- Archive
- Spam
- Trash
- Less
- Views** Hide
- Photos
- Documents
- Travel
- Coupons
- Tutorials
- Folders** Hide
- + New Folder
- 10 Days Organize
- 40 Days in the Wo...
- SK Run
- A Operation ... 3
- A Quiet Time 8
- A Rick Warren
- a Wayne 8
- AAUW
- aCompel
- Adams\_Family
- APictureCour... 1
- aQuilt
- ARC
- ATT bills
- Beth Moore Event
- Bible Study
- Blog 17
- Book Club
- Bussis 1
- CCC Wedding
- Christian Course
- Christian Fiction ...
- Christmas\_Wish\_List
- CM Business
- Codes



# Dollar RADIO RENTALS

# Invoice

4824 S. 35th Street  
Phoenix, AZ 85040

Date	Invoice #
5/7/2018	15719

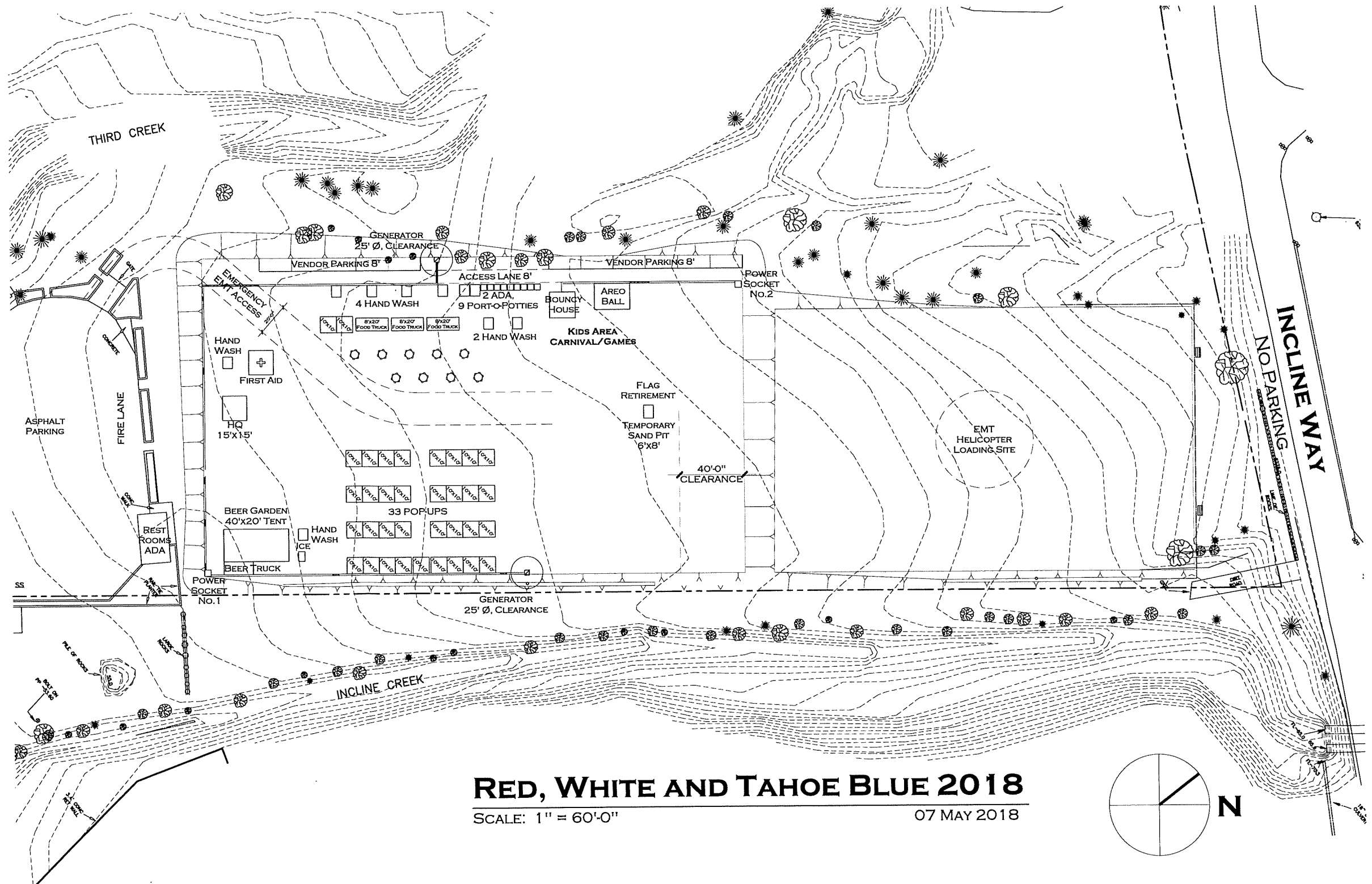
PAID  
05/07/2018

Bill To
Red, White, and Tahoe Blue Jeffrey Corman 809 Mccourry Blvd Incline Village, NV 89451

Ship To
Red, White, and Tahoe Blue Jeffrey Corman 809 Mccourry Blvd Incline Village, NV 89451

P.O. No.	Rep	Ship Via

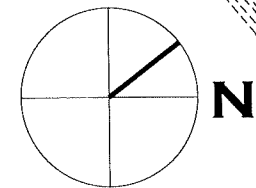
Item	Description	Days	Price Per Day	Amount
Rental	18 TR4X, 2 Repeaters, 18 DS, 1 Case, 9 Spares	5	157.02	785.10T
Shipping and H...	Shipping and Handling		147.12	147.12T
Damage Waiver	Covers all product against damage during the rental period. Does not cover lost or stolen equipment.		117.77	117.77T
	June 30-July-04		0.00	0.00
<b>Total</b>				<b>\$1,049.99</b>

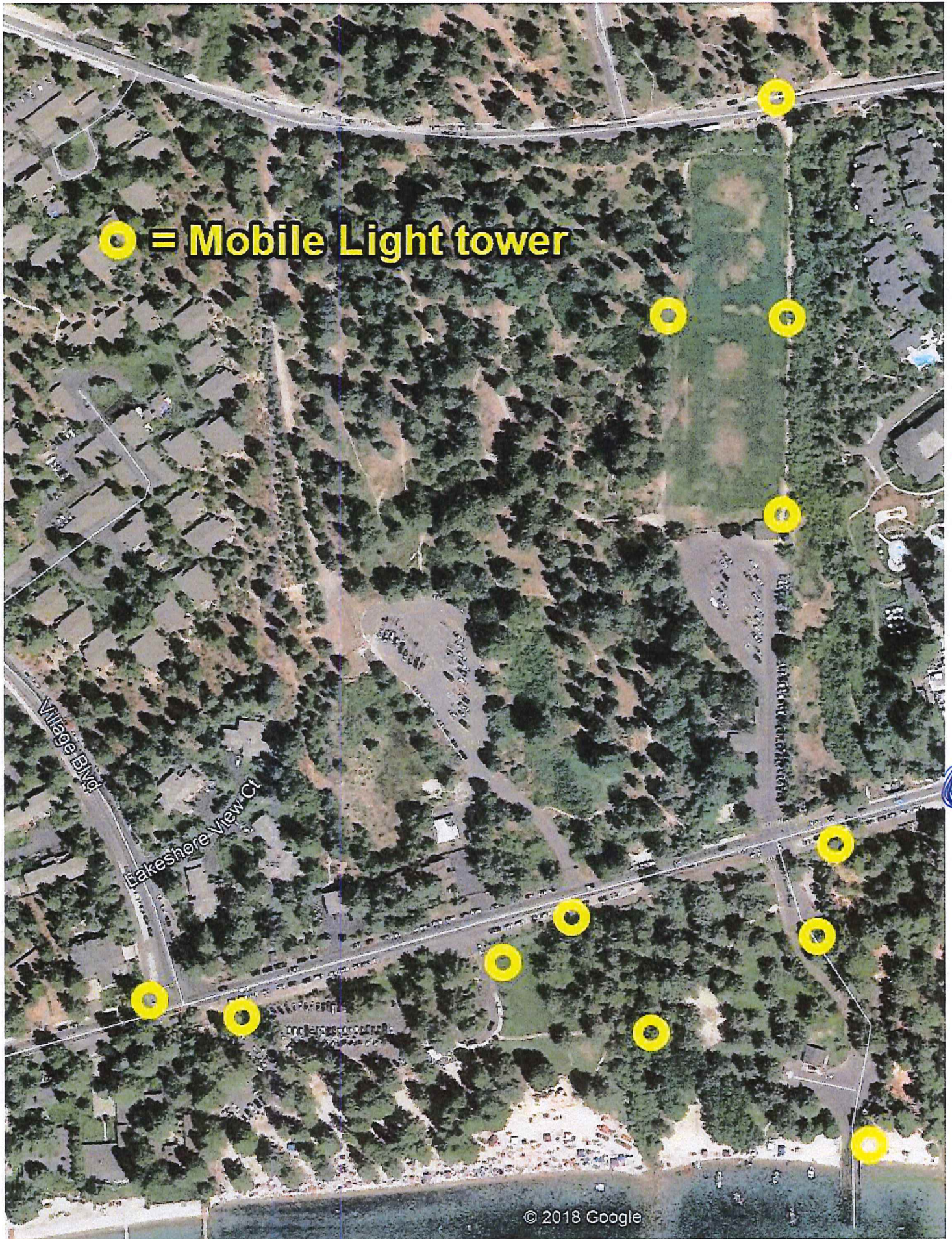


# RED, WHITE AND TAHOE BLUE 2018

SCALE: 1" = 60'-0"

07 MAY 2018

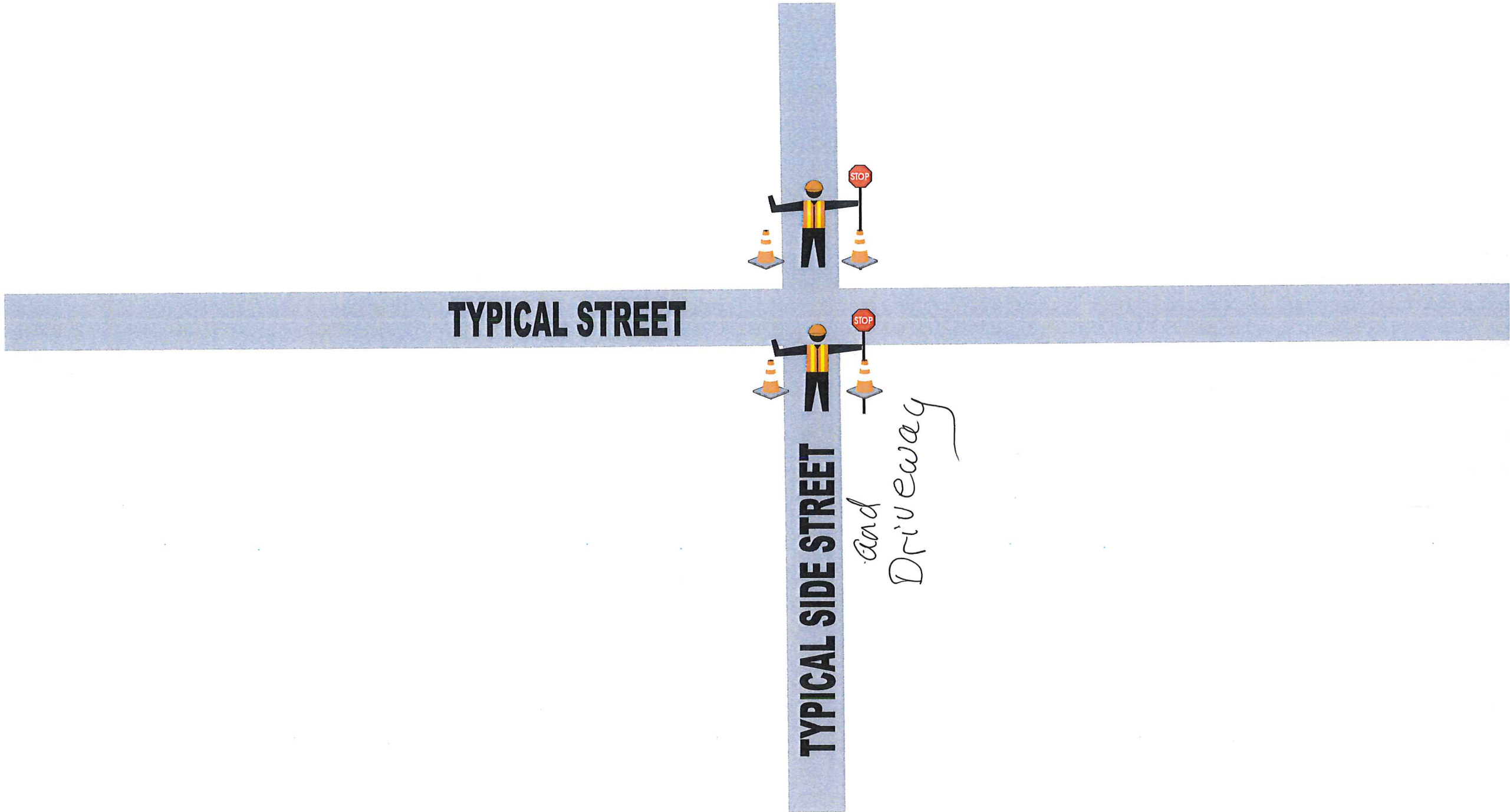




**○ = Mobile Light tower**

*○ = mobile light tower*

Rolling Closure



TYPICAL STREET

TYPICAL SIDE STREET

and Driveway

**ALDER**



**DRIVEWAY**

**DRIVEWAY**



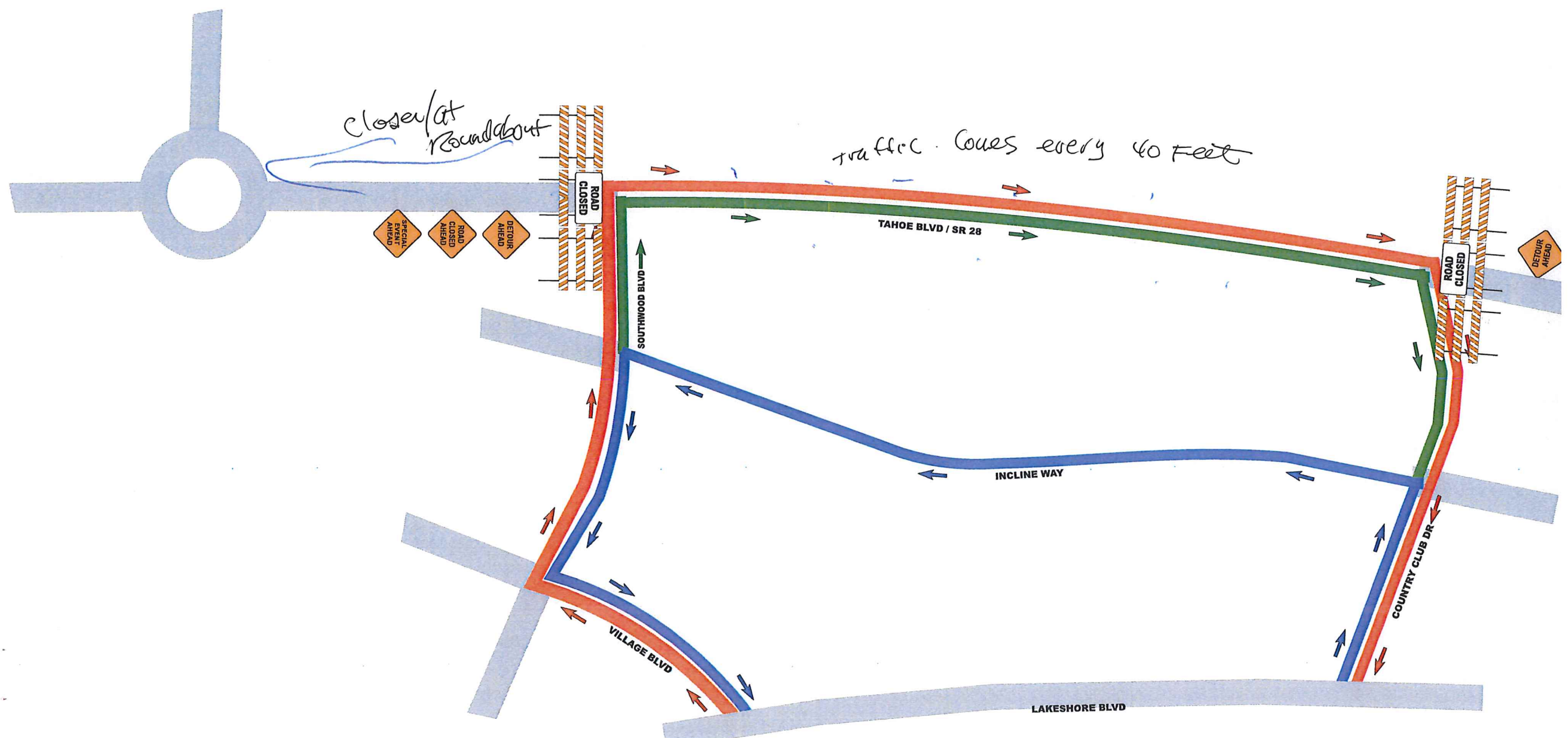
**LIBRARY**

Country Club  
Road Closed - ahead  
Detour Sign @ Country Club on 431



close/at roundabout

traffic cones every 40 feet





**DETOUR ROUTES**  
TO BE IMPLEMENTED JULY 4TH,  
2016

6AM-END OF OUTBOUND TRAFFIC  
FLOW

- TO EAST LAKESHORE BLVD
- TO WEST LAKESHORE BLVD
- TO EAST INCLINE WAY

**NOTE:**  
MOUNT M4-9 SIGNS ON TYPE II BARRICADES. ALL  
OTHER DETOUR SIGNAGE SHOWN ON PLAN SHEETS 3-5.

**TRAFFIC CONTROL PLAN**  
**RED, WHITE, AND TAHOE BLUE**  
INCLINE VILLAGE, WASHOE COUNTY, NEVADA



**DETOUR  
ROUTES**

Project #	Sheet
175	2
Date	
2/26/16	



2/26/16  
DATE



M4-9L 30"x 24"

SOUTHWOOD BLVD



M4-9R 30"x 24"

SEE INCLINE  
WAY  
SHEET 5

VILLAGE BLVD

NO PARKING  
SIGNS (TYP.)



R7-1 12"x18"

JUANITA DR



M4-8a 28"x 18"



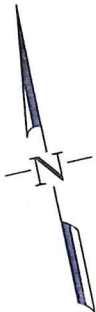
M4-10L 48"x 18"



W20-3 36"x 36"

100'

SEE  
LAKESHORE  
BLVD  
SHEET 4



LAKESHORE BLVD

TRAFFIC CONTROL PLAN FOR VILLAGE  
BLVD FROM SOUTHWOOD BLVD TO  
LAKESHORE BLVD

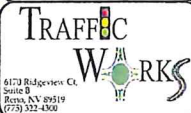
TO BE IMPLEMENTED JULY 4TH, 2016

6AM TO 11PM\*

NOTES:

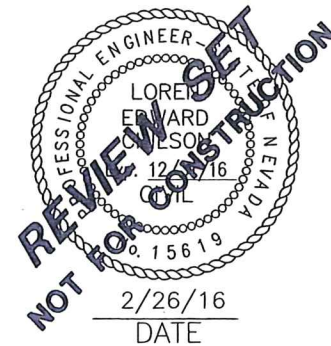
1. "NO PARKING" (MUTCD R7-1, SHOWN ABOVE) SIGNS SHALL BE SECURELY AFFIXED TO CONES AND SPACED AT 75 TO 100 FEET APART ON EAST AND WEST SIDE OF VILLAGE BLVD. SIGNS MAY BE PAPER IF PRINTED AS LARGE AS POSSIBLE TO FIT 11" X 17" FORMAT.  
  
\* "NO PARKING" SIGNAGE SHALL BE IMPLEMENTED FRIDAY, JULY 1ST, 2016
2. ALL OTHER SIGNS SHALL BE MOUNTED ON MUTCD TYPE II BARRIERS.

TRAFFIC CONTROL PLAN  
RED, WHITE, AND TAHOE BLUE  
INCLINE VILLAGE, WASHOE COUNTY, NEVADA



VILLAGE  
BLVD

Project # 175	Sheet 3
Date 2/26/16	



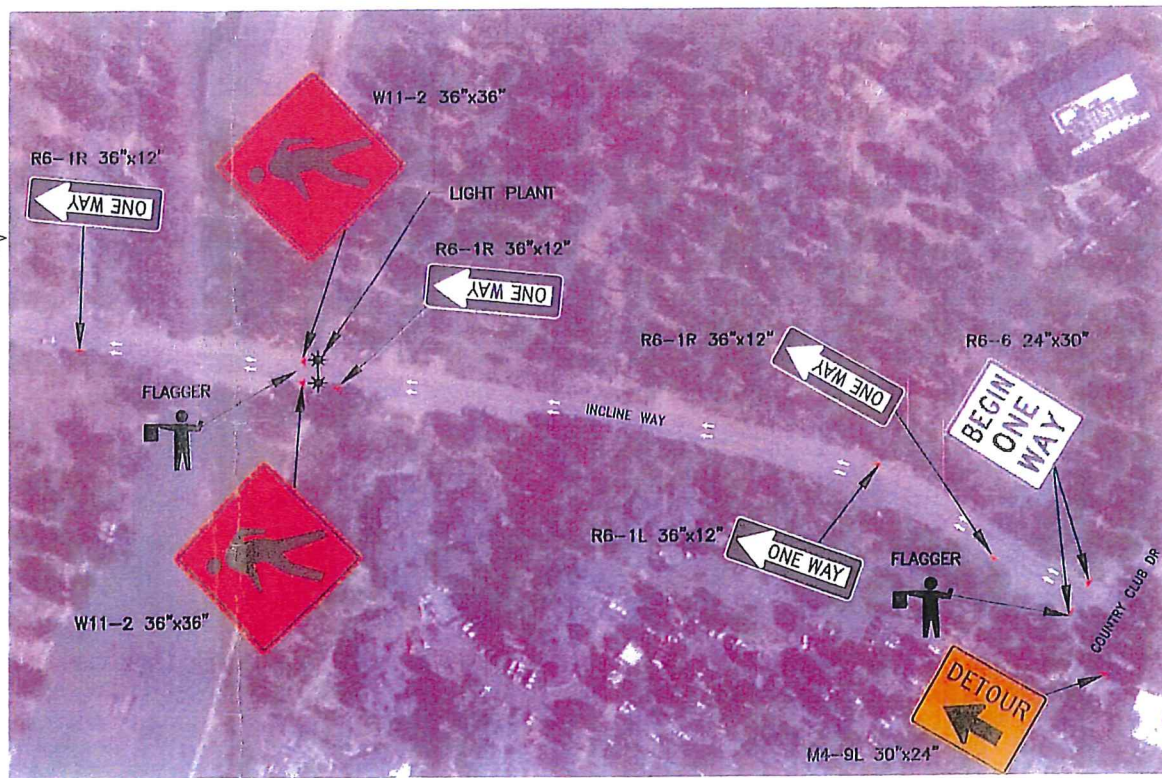
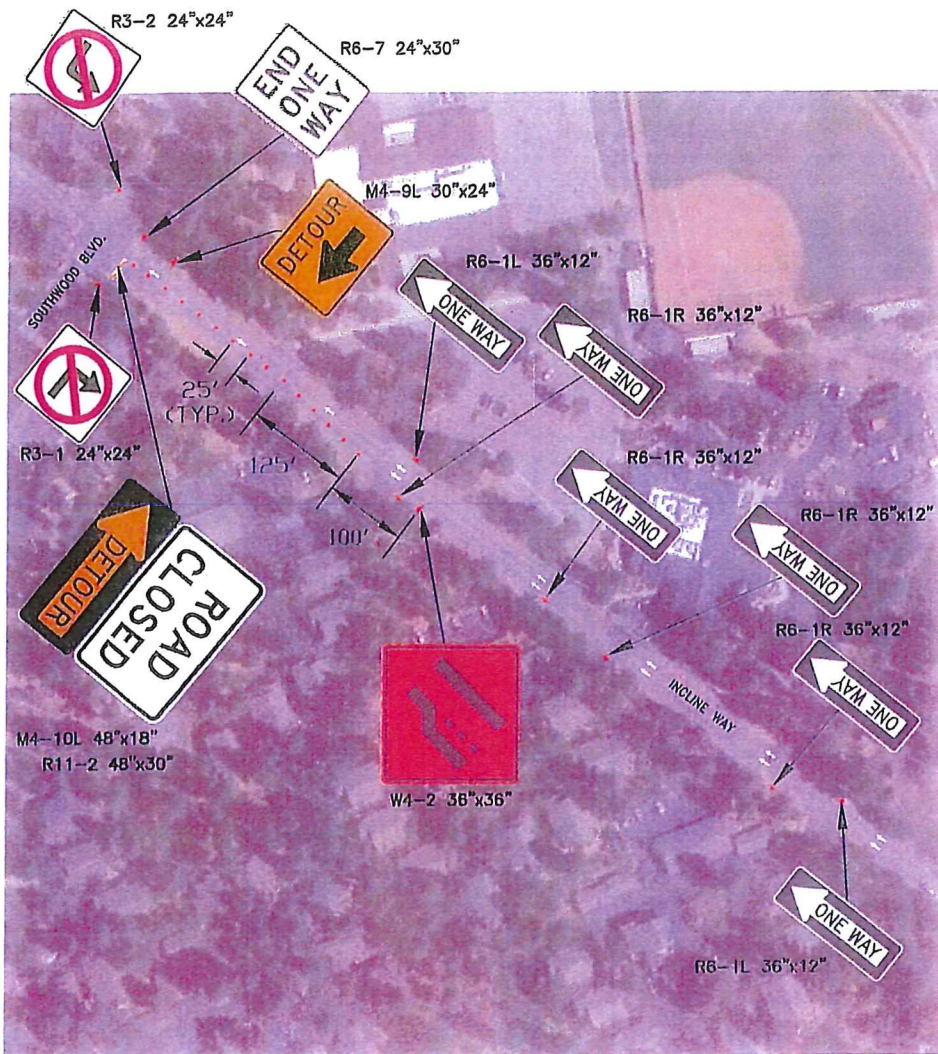
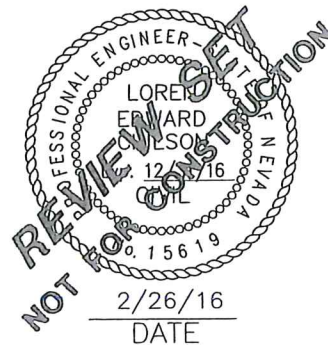




TRAFFIC CONTROL PLAN FOR INCLINE WAY FROM COUNTRY CLUB DRIVE TO SOUTHWOOD BLVD

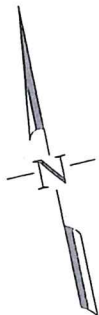
TO BE IMPLEMENTED JULY 4TH, 2016

6AM-BEGINNING OF FIREWORKS SHOW

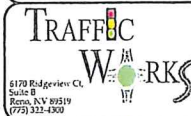


**NOTES:**

1. MERGE LANE CONE SPACING: 25 FT
2. MERGE TAPER LENGTH: 125 FT
3. INCLINE WAY EASTBOUND TRAVEL LANE SHALL BE CLOSED AT SOUTHWOOD BLVD WITH R11-2 AND M4-10L SIGNS MOUNTED ON A TYPE III BARRICADE.
4. ALL OTHER SIGNS SHALL BE MOUNTED ON TYPE II BARRICADES.
5. TRAFFIC CONTROL DEVICES SHALL BE REMOVED PRIOR TO THE END OF THE FIREWORKS SHOW TO RESTORE TWO-WAY TRAFFIC FLOW PER SHEET 6.



TRAFFIC CONTROL PLAN  
RED, WHITE, AND TAHOE BLUE  
INCLINE VILLAGE, WASHOE COUNTY, NEVADA



INCLINE WAY

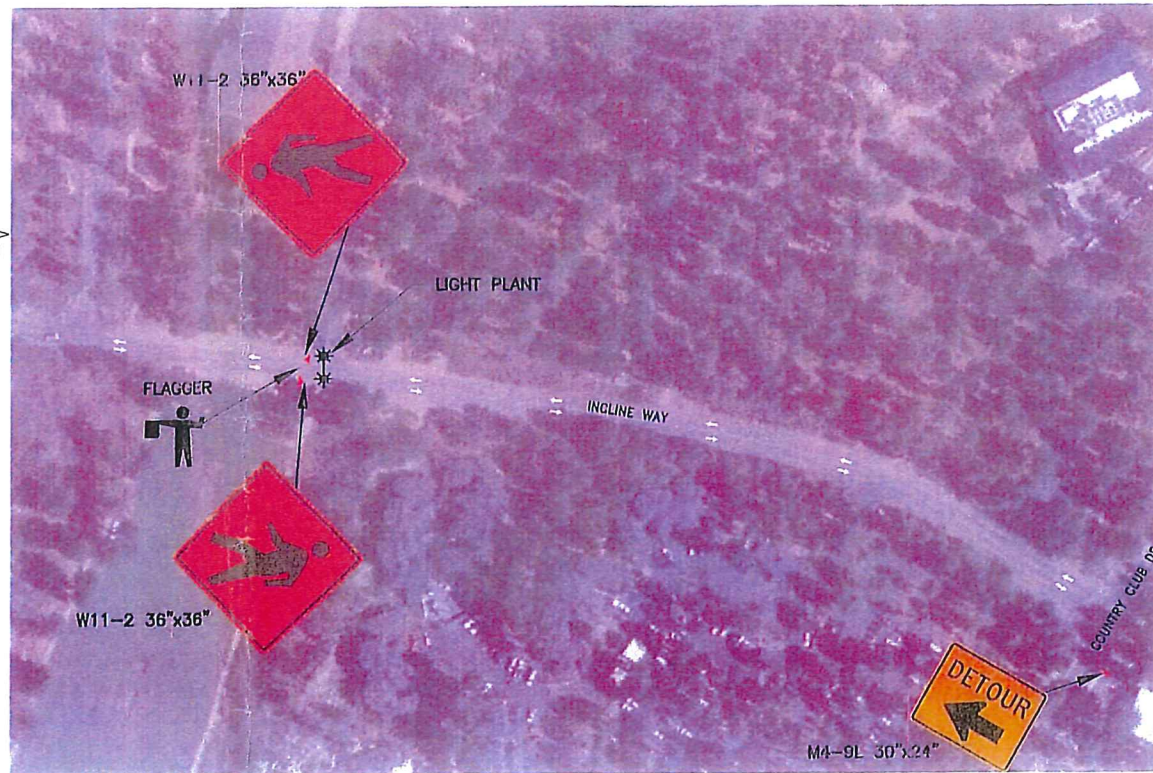
Project # 175	Sheet 5
Date 2/26/16	

OUTBOUND TRAFFIC CONTROL PLAN FOR INCLINE WAY FROM  
COUNTRY CLUB DRIVE TO SOUTHWOOD BLVD  
TO BE IMPLEMENTED JULY 4TH, 2016

BEGINNING OF FIREWORKS SHOW – 11PM

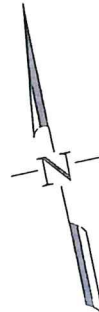


NOT FOR REVIEW ONLY CONSTRUCTION  
 2/26/16  
 DATE

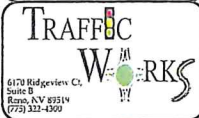


**NOTES:**

1. REMOVE ONE-WAY SIGNAGE TO RESTORE STREET TO TWO DIRECTIONAL MOVEMENT.
2. ROTATE PEDESTRIAN CROSSING SIGN TO FACE THE CORRECT DIRECTION.



**TRAFFIC CONTROL PLAN**  
**RED, WHITE, AND TAHOE BLUE**  
 INCLINE VILLAGE, WASHOE COUNTY, NEVADA



**INCLINE WAY**  
**(OUTBOUND/ POST EVENT)**

Project # 175	Sheet 6
Date 2/26/16	

UNIFORMED FLAGGER LOCATIONS  
OUTBOUND (POST EVENT)

TO BE IMPLEMENTED BY NEVADA HIGHWAY PATROL & WASHOE COUNTY SHERIFF'S OFFICE

JULY 4TH, 2016  
END OF FIREWORKS - 11PM



**TRAFFIC CONTROL PLAN**  
**RED, WHITE, AND TAHOE BLUE**  
INCLINE VILLAGE, WASHOE COUNTY, NEVADA

**TRAFFIC WORKS**  
6170 Bridgeway Ct.  
Suite B  
Reno, NV 89519  
(775) 322-4300



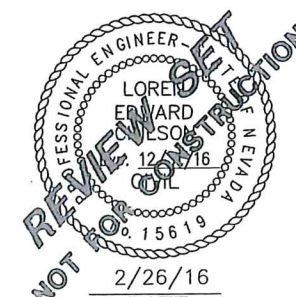
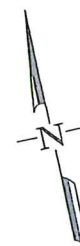
UNIFORMED  
FLAGGER  
LOCATIONS  
(POST EVENT)

Project # 175	Sheet 7
Date 2/26/16	

UNIFORMED FLAGGERS SHALL CONDUCT TRAFFIC CONTROL AT THE FOLLOWING LOCATIONS:

LAKESHORE BLVD / VILLAGE BLVD  
LAKESHORE BLVD / COUNTRY CLUB DR  
SR 28 / LAKESHORE BLVD (EAST END)  
SR 28 / LAKESHORE BLVD (WEST END)  
SR 28 / COUNTRY CLUB DR  
IMPLEMENT FLASHING ALL RED SIGNAL OPERATION

SR 28 / SOUTHWOOD/NORTHWOOD BLVD (WEST)  
IMPLEMENT FLASHING ALL RED SIGNAL OPERATION  
SR 28 / VILLAGE BLVD  
IMPLEMENT FLASHING ALL RED SIGNAL OPERATION  
INCLINE WAY / COUNTRY CLUB DR  
INCLINE WAY / SOUTHWOOD BLVD  
VILLAGE BLVD / SOUTHWOOD BLVD



Roundabout

Barricade

STAGING AREA

PARADE START

Staging area

Parade starts

Barricade at Library Driveways

Library start for kids walking path

MATCH LINE

MATCH LINE

Country Club

Barricade

Need APPROX times as Parade rolls @ main Intersections & BUSY Driveways

RED, WHITE AND TAHOE BLUE 2018 - PARADE ROUTE



PARADE END

Barricade

PROJECT

RED, WHITE AND TAHOE BLUE 2018

PARADE ROUTE

INCLINE VILLAGE, NEVADA

REVISIONS:

DATE OF ISSUE: 12 JAN 2017

ISSUED FOR:

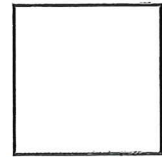
DRAWN BY:

CHECKED BY:

SCALE: NOT TO SCALE

PROJECT No.:

SHEET CONTENTS



SHEET NUMBER